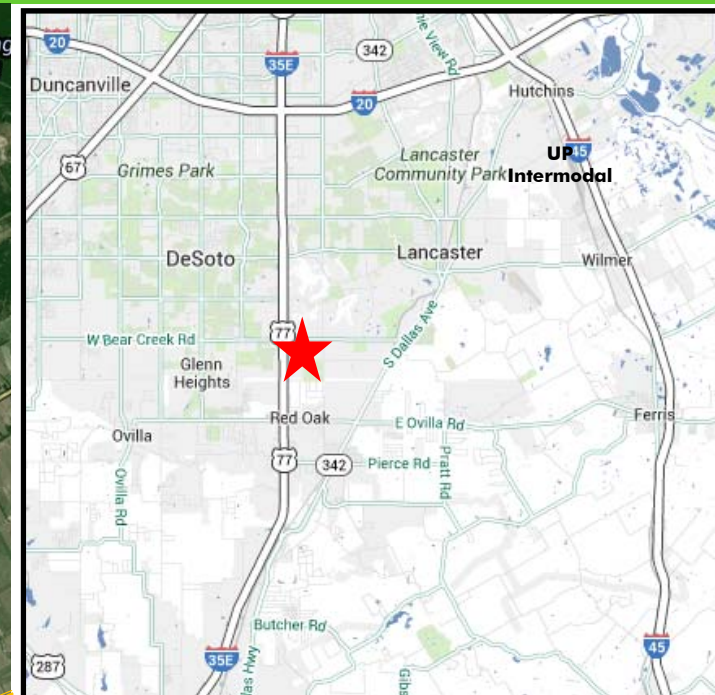
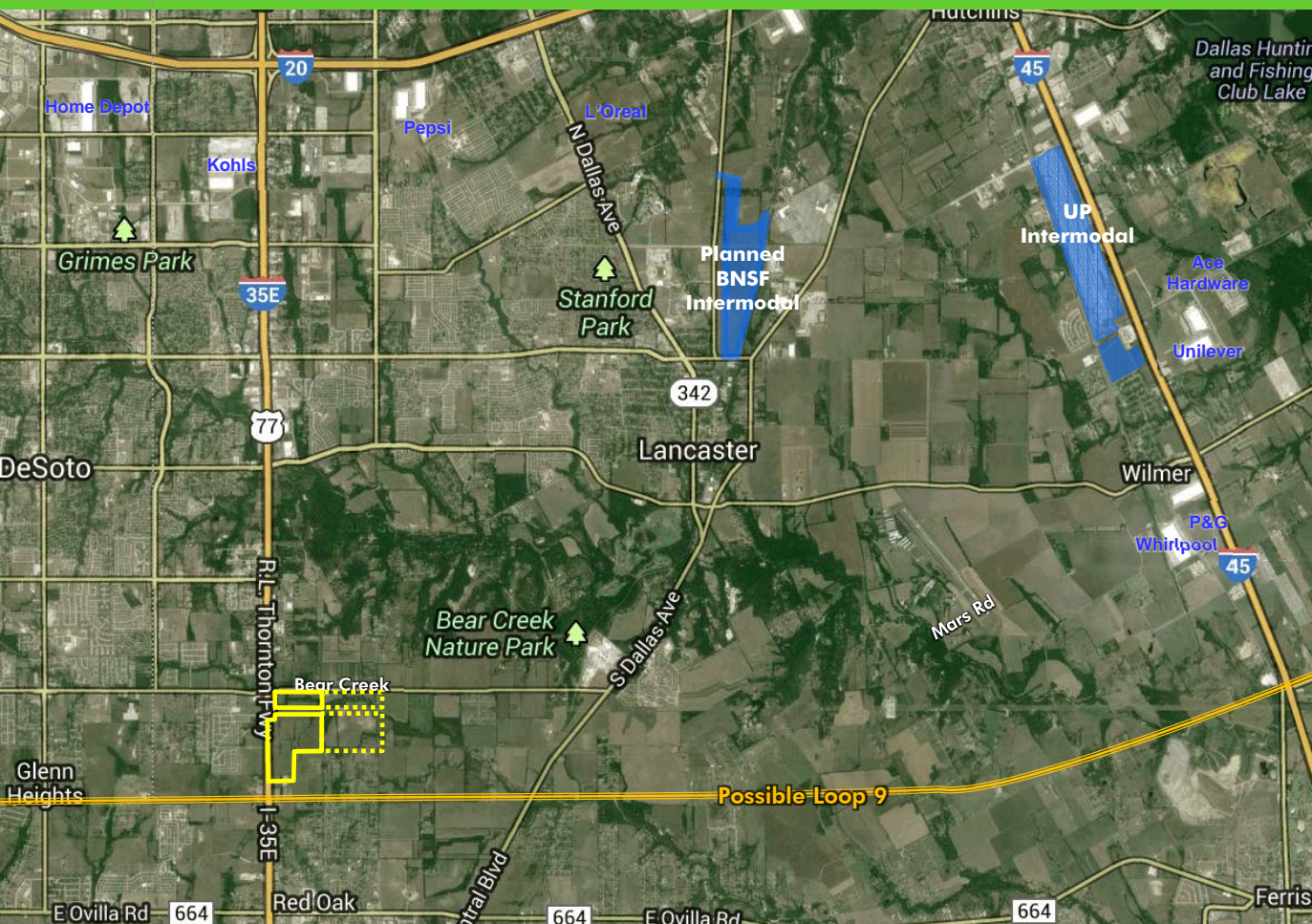


± 159.5 GROSS ACRES

INTERSTATE 35E & BEAR CREEK RD

LANCASTER, TEXAS

- FEATURES:**
- Will be Zoned Industrial
 - Adjacent ± 140 Acres also available
- INCENTIVES:**
- Triple Freeport
 - City Abatements Available
- INTERMODAL:**
- 8 Miles to UP
- ACCESSIBILITY:**
- Frontage on I-35E
 - 5 Miles to I-20
 - 8 Miles to I-45
 - Possible Frontage on Future Loop 9



FOR MORE INFORMATION CONTACT

Dave Anderson

Executive Vice President

214.979.6500

dave.anderson@cbre.com

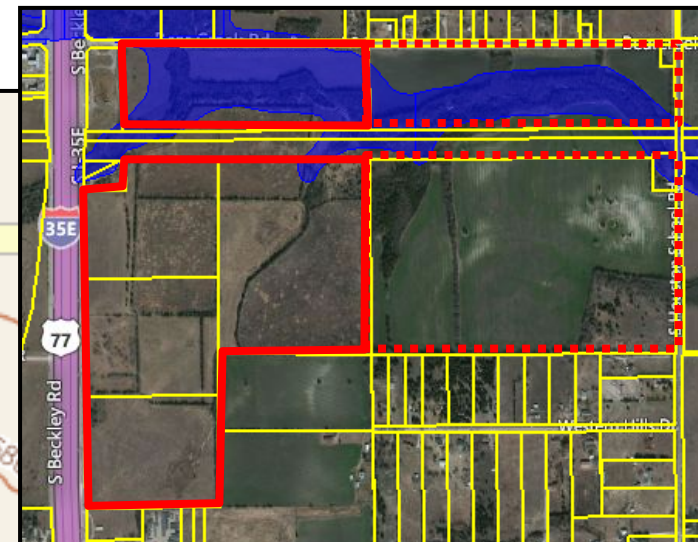
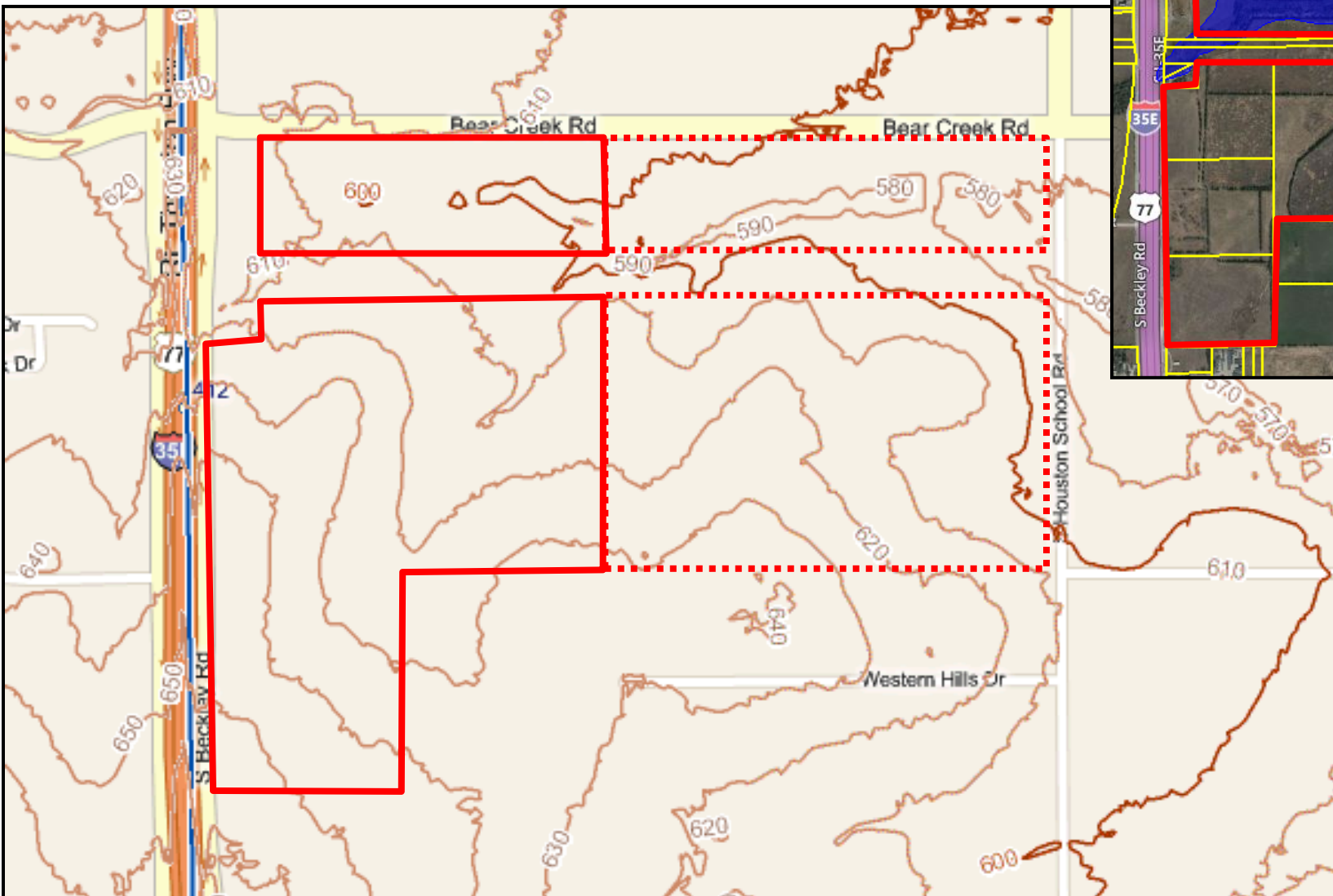




± 159.5 GROSS ACRES
INTERSTATE 35E &
BEAR CREEK ROAD
 LANCASTER, TX

FOR SALE

TOPOGRAPHY:



**FOR MORE INFORMATION
 PLEASE CONTACT:**

Dave Anderson
 Executive Vice President
 214.979.6500
 dave.anderson@cbre.com

2100 McKinney | Suite 700 |
 Dallas, TX 75201
 www.cbre.com/dallas

©2013 CBRE, Inc. The information above has been obtained from sources believed reliable. While we do not doubt its accuracy, we have not verified it and make no guarantee, warranty or representation about it. It is your responsibility to independently confirm its accuracy and completeness.

